

# HYDROGEN SEMI TRUCK

MAXIMUM UTILITY, ZERO EMISSIONS



## KEY FEATURES

- GBV ELECTRICS
- 25.6 TON GVM
- 50 TON GCM
- INSTANT TORQUE
- QUICK REFILL
- 500+ KM RANGE
- ZERO EMISSIONS
- REDUCED NOISE

TOMORROW'S TRANSPORT, TODAY



## SALES & ENQUIRIES

Office 03 347 2167 [info@globalbusventures.co.nz](mailto:info@globalbusventures.co.nz)

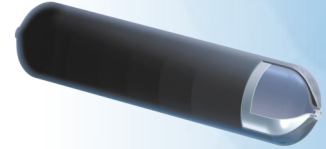
Mike Parker 021 852 767 [mike.parker@gbv.co.nz](mailto:mike.parker@gbv.co.nz)

[www.globalbusventures.co.nz](http://www.globalbusventures.co.nz)

# SYSTEM OVERVIEW

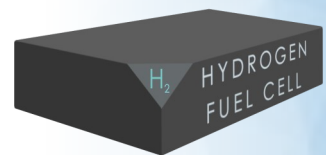
## HYDROGEN

<b>TYPE</b>	Type 4	<b>PRESSURE</b>	350 bar
<b>MATERIAL</b>	Polymer Liner Carbon Fibre Overwrap	<b>H<sub>2</sub> QUANTITY</b>	55+ kg



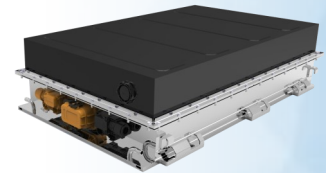
## FUEL CELL

<b>MAKE</b>	TOYOTA	<b>AMBIENT TEMP.</b>	-30°C to 45°C
<b>POWER</b>	2 x 85 kW	<b>VOLTAGE</b>	400 - 750 V



## BATTERIES

<b>MODEL</b>	288Ah	<b>CAPACITY</b>	124 kWh
<b>VOLTAGE</b>	MIN / NOM / MAX 486 / 666 / 756 V	<b>MAX CONT. CURRENT</b>	500 A
<b>AMBIENT TEMP.</b>	-20°C to 55°C	<b>IP RATING</b>	IP68
<b>TYPE</b>	MpCO	<b>LIFESPAN</b>	7000 cycles



## ELECTRIC DRIVE SYSTEM

<b>MAX OPERAT- ING SPEED</b>	3500 RPM	<b>CONTINUOUS TORQUE</b>	1760 Nm
<b>PEAK POWER</b>	460 kW	<b>TYPE</b>	Permanent Magnet
<b>PEAK TORQUE</b>	2570 Nm		

